

RWL7 SERIES

ROADVISION™



FEATURES

- RWL7 Series LED work lamps produces a light output of up to 4500 max lumens
- Combo Beam Pattern
- Thermal Management Technology
- Osram Hi-Lux LED's produce super white light close to daylight.
- Multi-volt 10-30V DC input & super low current draw
- 50,000 hour LED lifespan with solid state technology
- Light weight tough die-cast aluminium housing & polycarbonate lens
- Simple 2 wire installation
- Over/under voltage, reverse polarity protection & EMI/EMC radio interference approved

LED WORK LAMPS



ROADVISION's RWL7 Series work lamps offer uncompromised performance and energy efficiency whilst being compact and easy to install. A perfect combination of spot and beam patterns deliver the light beam patterns for any application without the need to install 2 separate lamps. The RWL7 Series work lamp feature a lightweight die-cast housing and polycarbonate lens, allowing for worry free operation in even the toughest conditions.

PART NUMBERS



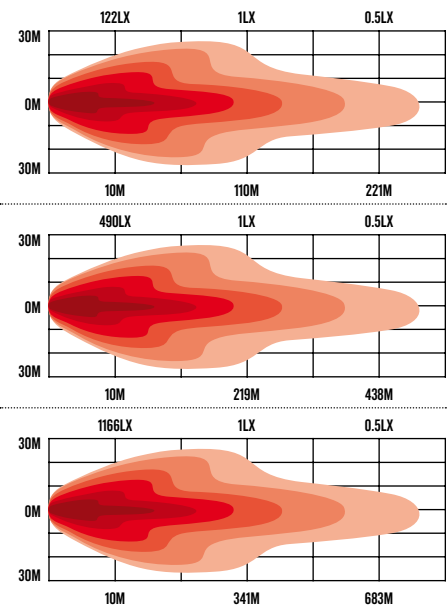
RWL7924C
LED Work Light 10-30V Square 24W Combo Beam

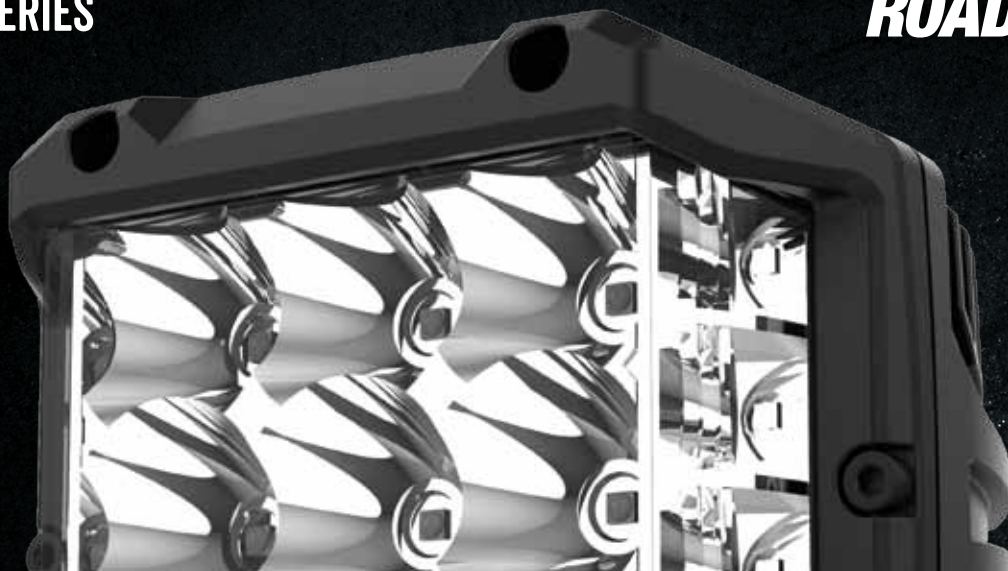


RWL7429C
LED Work Light 10-30V Square 29W Combo Beam



RWL7955C
LED Work Light 10-30V Square 55W Combo Beam





SPECIFICATIONS	RWL7924C	RWL7429C	RWL7955C
BEAM PATTERN	Combo	Combo	Combo
MAXIMUM LUMENS	1500lm	2100lm	4500lm
INPUT VOLTAGE	10-30 VDC	10-30 VDC	10-30 VDC
MAXIMUM WATTS	24W	29W	55W
NUMBER OF LEDS	9 x 1.6W Osram LEDS & 6 x 1.6W Osram LEDS	4 x 5W Osram LEDS & 6 x 1.6W Osram LEDS	9 x 5W Osram LEDS & 8 x 1.2W Osram LEDS
CURRENT DRAW @ 13.8V	1.8 Amps	1.88 Amps	4.2 Amps
MAXIMUM LUX @ 10M	122LX	490LX	1166LX
LENS CONSTRUCTION	Polycarbonate	Polycarbonate	Polycarbonate
HOUSING CONSTRUCTION	Aluminium	Aluminium	Aluminium
DIMENSIONS AXBXC	97 x 73 x 89mm	97 x 73 x 89mm	118 x 136 x 90mm

LINE DIAGRAM

